

The information contained in this drawing is the sole property of CWS Coil Winding Specialist. Any reproduction in part or whole without written permission of CWS Coil Winding Specialist is prohibited.

DIMENSIONAL TOLERANCES									
INCHES [MM]									
A	B	C	D	D1	E	P			
MAX	MAX	MIN	MAX	MAX	UNTINNED	REF			
0.98	0.59	0.50	0.14	0.07	0.50	0.50			
[25.00]	[15.00]	[12.70]	[3.50]	[1.80]	[+1.00/-1.50]	[12.70]			

REVISION HISTORY					
REV	ECN	DESCRIPTION	SIGN & DATE		
A		INITIAL DRAWING RELEASE	BY	DATE	CHK
			TN	09/04/22	JL



SCHEMATIC

- 9 BUILD TO RoHS COMPLIANCE AND LEAD FREE.
- 8 VARNISH PART AND CURE

- 7 WRAP COIL WITH GLASS TAPE AS SHOWN

- 6 REMOVE INSULATION AND TIN LEADS AND SOLDER THEM TOGETHER

- 5 WIND COILS EVENLY SPACED AROUND THE CORE  
WRAP CORE WITH GLASS TAPE BEFORE WINDING AS SHOWN.

- 4 CONSTRUCTION:

WEIGHT: 14 GRAMS TYPICAL

RECOMMENDED AMBIENT OPERATING TEMP: -40°C TO 125°C

HI-POT TEST FOR WINDING TO CORE ISOLATION = 2000VDC, 1s.

INDUCTOR RATED CURRENT = 20 AMPS

DCR = 1.80 MILLI-OHMS MAX.

INDUCTANCE = 2.40 - 3.0uH @ 0 AMP DC BIAS, 1.0 KHz, 250mV

- 3 SPECIFICATIONS: @ 25°C:

VARNISH: DOLPH OR EQUAL

WIRE: UL RECOGNIZED 200°C RATED MAGNET WIRE

- 2 CORE: COATED FERRITE CORE

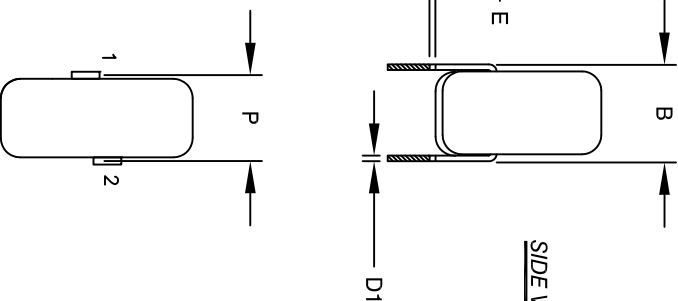
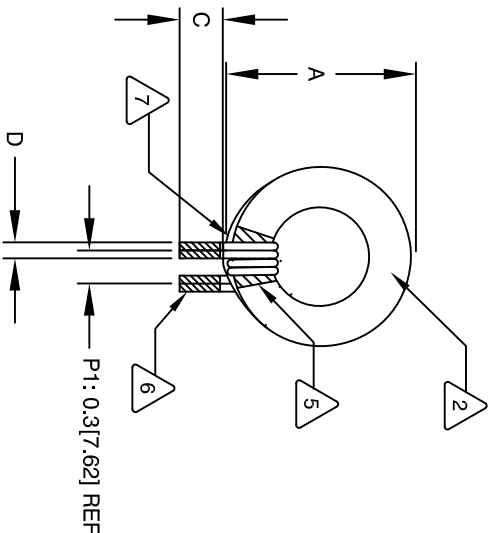
- 1 MATERIAL: UL RECOGNIZED 94V-0 FOR FLAMMABILITY, RATING CLASS B (130°C MIN), REQUIRED

ANY TOLERANCE. THIS DIM. CAN VARY A LITTLE FROM PART TO PART.

"TYP" IN DIM. TABLE REFERS TO A NON-CRITICAL TYPICAL (AVERAGE) DIM. WITHOUT

NOTES: UNLESS OTHERWISE STATED, READ NOTES FROM BOTTOM UP.

CAGE CODE: 5DME2



SIDE VIEW

FRONT VIEW

MOUNTING HOLES PATTERN

CODE		MFG. P/N	DESCRIPTION	ITEM
IDENT				NO.
PARTS LIST				
AUTOCAD	X		COLIWS COM, INC www.coliws.com 353 W. Grove Ave. Orange, CA 92665	CWS Coil Winding Specialist.
SOLIDWORKS				
SIGN	DATE			
DRAWN	TN	09/04/22		
CHECKED	JM	09/04/22	TOROIDAL INDUCTOR	
ENGR.	JL	09/04/22		
APPR.	JL	09/04/22		
SCALE		B		
SIZE		DWG. NO.	CWS-1TF-12198	REV
ANGLE PROJECTION		A		
DO NOT SCALE DRAWING		SHEET 1		OF 1
UNLESS OTHERWISE SPECIFIED				
DIMENSIONING AND TOLERANCE PER ANSI Y14.5M				
ALL DIMENSIONS ARE IN INCHES AND [MILLIMETERS]				
TOLERANCE INCHES:				
.XXX=±.005 .XX=±.015 .X=±0.30'				
TOLERANCE METRICS:				
.XXX=±.127 .XX=±.38 .X=±.8				

## TOROIDAL INDUCTOR

CWS-1TF-12198

2=1

SHEET 1 OF 1